

THE ALAN ROSS CENTRE



Billanook College

TECHNICAL SPECIFICATIONS

2015

Contact:
Andrew Spurr
Centre Operations Officer
Phone: 03 9724 1199
Fax: 03 9725 8556
Email: arcbookings@billanook.vic.edu.au
Website: www.billanook.vic.edu.au





Stage

Stage Description:

Proscenium Arch with tracking (no flying). Sprung floor covered with masonite sheets. No fixing/screwing into stage surface.

Stage distributed load limit	7.5KPa
Stage point load limit	450Kg/cm ²
Stage rake	No

Stage Dimensions:

Proscenium

Width	12 metres
Height	6 metres

Stage

Width	12 metres
Deep	7 metres (Curtain to cyc)
Apron	2 metres (Curtain to stage lip, curved)

Wings

Prompt	2.5 metres
Off Prompt	11 metres

Auditorium:

Raked seating – Entrance aisle between rows D & E.
Seating capacity **475 (see map)**

Orchestra Lift / Pit:

Orchestra Pit

No Orchestra Pit

Flying Facilities:

Fly System

There is NO fly tower

5 full lengths of P1000 Unistrut are available for tracking – 4 pick-ups per track



THE ALAN ROSS CENTRE TECHNICAL SPECIFICATIONS



Billanook College

Hanging Plot:

MW = Motor Winch, TR = P1000 Unistrut Track

S.W.L.: Maximum distributed load including bar weight (Kg)

Line #	Distance from Curtain	Line Type	S.W.L.	Venue Allocation	Intended Use (Hiring company use)
1	-6.5m	MW	250	LX BAR #1	
2	-0.8m	MW	250	LX BAR #2	
3	-200			Valance	
4	-100			House Curtain	
5	400			Legs	
6	500	MW	250	LX BAR #3	
7	700			Border	
8	1300	MW	100	Projector Screen	Access to bar by prior arrangement only.
9	1400			Legs	
10	1700	TR		Unistrut	
11	2200	TR		Unistrut	
12	2600			Border	
13	2700			Mid Tabs	
14	3200	MW	250	LX BAR #4	
15	3600	TR		Unistrut	
16	4200	TR		Unistrut	
17	4700	TR		Unistrut	
18	5200			Legs	
19	5300			Borders	
20	5500	TR		Unistrut	
21	5800	MW	250	LX BAR #5	
22	6600			Rear Tabs	
23	6900			Cyclorama	

Drapery:

*Type	Material	Colour	Width	Height	Quantity
Cyclorama	Filled cloth	White	16000mm	8700mm	1
Upstage Tabs	Wool, 50% gathering	Black	8000mm	7630mm	2
Mid-stage Tabs	Wool, 50% gathering	Black	8000mm	7630mm	2
Borders	Wool, 50% gathering	Black	16000mm	2500mm	4
Legs (360° index)	Wool, 50% gathering	Black	2800mm	7630mm	8
House Curtain	Velvet, 80% gathering	Black	7000mm	7200mm	2
Valance	Velvet, 80% gathering	Black	14000mm	2500mm	1

The Alan Ross Centre

Billanook College

197-199 Cardigan Road

Mooroolbark VIC 3138

Tel: (03) 9724 1199 Fax: (03) 9725 8556



THE ALAN ROSS CENTRE TECHNICAL SPECIFICATIONS



Billanook College

Access Equipment:

Elevated Work Platform

1 x JLG 20MVL motorised vertical lift.

EWP Restrictions

EWP licence required.

Ladders

1x 3m fibreglass

1x 3m aluminium (not for electrical use)

Loading Dock:

Access

Loading Dock Height

Ground level - loading bay & stage are at the same height

Door Dimensions

5500mm High x 2750mm Wide

Restrictions / Obstructions

Larger trucks must park 90° to loading dock.

Staging Notes:

All flown/tracked items must be rigged with rated equipment and are subject to approval by the Centre Operations Officer.

The Alan Ross Centre

Billanook College

197-199 Cardigan Road

Mooroolbark VIC 3138

Tel: (03) 9724 1199 Fax: (03) 9725 8556



THE ALAN ROSS CENTRE TECHNICAL SPECIFICATIONS



Billanook College

Lighting

Positions:

Stage LX Bars fixed – cannot be swung
 See hanging plot for standard LX bar locations

FOH LX #1

Curtain to lighting bar 8.9m @ 65 deg
Width & Patch # 16m. (1 - 36)
Notes 36 patch points, 2 x video, 1 x DMX & Ethernet

FOH LX #2

Curtain to lighting bar 6m @ 85 deg
Width & Patch # 12m. (37 - 60)
Notes 24 patch points, 2 x video, 1 x DMX & Ethernet

FOH LX #3

Curtain to lighting bar 6.5m @ 85 deg
Width & Patch # 14m. (169 - 180, J1 - J12)
Notes 24 patch points, 2 x video, 1 x DMX & Ethernet

FOH LX #4

Curtain to lighting bar 8m @ 75 deg
Width & Patch # 14m. (120 - 144)
Notes 24 patch points, 2 x video, 1 x DMX & Ethernet

FOH LX #5

Curtain to lighting bar 9m @ 65 deg
Width & Patch # 14m. 145 - 148)
Notes 24 patch points, 2 x video, 1 x DMX & Ethernet

FOH Booms (PS & OP)

Patches per boom (3) Booms per side
 6. (61 - 96)
Notes Standard rig has no lighting on these bars

STAGE

Patches & Patch # 6 per corner of stage (97 - 120)

Control:

Lighting desk ETC ion 1000 (1024 Channels)
Signal output 2 x DMX512 outputs, RDM ready
Signal distribution One stream of DMX to dimmers, one spare

Dimmer Racks:

Total Dimmers 6 x Jands WMX-A = 72 dimmers @ 2.4kW
 2 x LSC 12 x 2.4k available by prior arrangement
Dimmer Locations PS Catwalk

House Lights:

Independent control Yes from Control Room and Stage Manager





Stage Luminare

Profiles

Make	Model	Angle	Detail/Accessories	Watt	Total
ETC	Source 4	15 - 30		750w	12
ETC	Source 4	25 - 50		750w	10
ETC	Source 4 Jr	25 - 50	3 x 3 rows - downlights	575w	9
Selcon		24 - 40		650w	4

Fresnels

Make	Model	Detail/Accessories	Watt	Total
Spotlight	Combi		1200w	12

PC

Make	Model	Detail/Accessories	Watt	Total
Spotlight	Combi		1200w	12
Spotlight	Combi		650w	10

Par Cans

Make	Model	Angle	Detail/Accessories	Watt	Total
ETC	Par64			1000w	8
ETC	Par56			300w	8
ETC	LED PAR				6

Wash

Make	Model	Detail/Accessories	Watt	Total
Spotlight	Domino	(4) cells per unit (cyc)	1000w	16

Followspots

Make	Model	Angle	Detail/Accessories	Watt	Total
Spotlight	Vedette			2500w	2

Movers

Make	Model	Angle	Detail/Accessories	Watt	Total
Martin	MAC500			575w	4

Additional Lighting

Available on request through our suppliers at a discounted rate.



THE ALAN ROSS CENTRE TECHNICAL SPECIFICATIONS



Billanook College

Power:

- 3 Phase Outlets (all 40amp Wilco Plugs)
- 8 x PS Gallery
- 2 x Rear wall (P & OP)

Cabling:

- 240v Extension Cable
- The venue has a good stock of 240v (10 amp) extension leads to accommodate our standard rig.
- Any additional equipment may require additional leads to be sourced.

Looms:

- The venue has a limited supply of looms
- 1 x 15m 4 way 240v
- 1 x 10m 4 way 240v

Lighting Notes:

There is no gantry/catwalk. Luminaries must be hung at floor level and can be focussed from the EWP.

The venue has a preferred supplier for hiring additional lighting. Please contact us for details.





Audio

Control Positions:

Control Room

Rear centre. Glass window slides to fully open.

Auditorium

Centre of rear two rows. 10 seats removed. Audio operator will need to move through audience to mixing position. Limited access to Control Room technology.

Other

Sub-mix from any tie-line patch. Sub-mixer to be patched through main console.

Control & Amplification:

Primary Mixer

- Yamaha M7CL - 48 channels, 4 stereo channels, 16 mix output channels, 8 matrix output channels.
Built in FLEX15GEQ and FX units.

Amplifiers

- Crown XLS802D – for stage lip fill (JBL AC16s)
(All FOH speakers are powered)

Driverack

- DBX-4800

EQ

- Built into Primary mixer, 4 x DBX-2231 are also available by prior arrangement

FX

- Built into Primary mixer, 1 x Lexicon MX400, 1 x TC300 - available by prior arrangement

Compression / Limiter / Gates

- Built into Primary mixer, 1 x DBX-1046 Quad compressor/limiter
- 1 x DBX 1074 Quad Noise Gate - available by prior arrangement

Speakers:

FOH Speakers

- (4) JBL VP212 speakers
- (2) JBL VPSB7118 subs

Foldback

- (4) JBL PRX 512M or (4) JBL AC16





Playback

Item	Make	Model	Detail	Total
Qlab Software	Apple	I-Mac		1

Microphones (Extra Costs)

Make	Model	Detail/Accessories	Use	Total
Shure	MX418		Lectern	2
Shure	SM58		Vocal	4
Shure	SM57		Instrument	8
Shure	MX393		Boundary	4
Sennheiser	IMX6A	Radio Microphone	Headset	8
Sennheiser	G300 series	Radio Microphone	Handheld	8

Accessories

Item	Model	Detail/Accessories	Total
Microphone Stands	K&M	With boom arm	10

Line Patching

Location	Quantity	Numbering	Detail
OP Downstage	24	1-24	24 sends, 12 returns
OP Upstage	24	25-36	12 sends, 4 returns
P Downstage	24	37-48	12 sends, 12 returns
P Upstage	24	49-60	12 sends, 4 returns
Studio	24	61-84	24 sends, 6 returns
Prod Desk & Foyer	6	85-91	6 sends, 6 returns
Stage Traps	6	92-97	6 sends, 6 returns

Audio Cable

There is a good stock of leads to accommodate the venue's equipment.

Multicore

In addition to many tie-lines throughout the venue:

1 x 30m, 16 sends (XLR), 4 returns (TRS)

2 x 10m, 12 sends (XLR), 4 returns (TRS)

Audio Notes:

A 300mm conduit is available from the Control Room to Stage Right.

A hearing loop is available in the Foyer & Auditorium.





Audio Visual

Projectors (Extra Charge)

Type	Model	Detail/Accessories	Total
Panasonic	D6000E	6,000 lumen projector	1

Screens:

Projection screen

Da-Lite Cosmopolitan Electrol - motorised (3120 x 4170mm)

Positioned in front of mid tabs

Projector Rigging Points:

Projector is rigged just behind Lighting Bar 1 in the Auditorium.

Cabling:

A good stock of AV cabling – RCA, BNC – to accommodate the venue's own equipment.





Backstage

Communications:

Stage Manager's Desk

Stage Manager's desk is located OFF PROMPT.

Clock, Audience recall, Talkback, House Light control, Paging Mic, LCD monitor

Talkback

Master Unit

Ezicom200

Total sub stations

6 x Ezicom 100 Beltpacks

1 x permanently for Stage Manager

Total headsets

7 x CC95 single muff headsets

Talkback patching located at: 2 x Control Room

Stage Manager's Desk

Followspots (2)

Prompt Stage

Production Facilities:

Production Desk (if required)

Production Desk set-up in the centre of Row E. DMX, GPO.

Phone

Emergency calls can be made from a phone in the Centre Operations Officer's Office.

Internet access

Access may be available by prior arrangement. This service will attract additional charges.

Backstage:

Tea/coffee facilities Yes

Fridge Yes

Microwave Yes

Running Water Yes

Additional Facilities & Information

Orchestral:

Yamaha C2 Grand Piano - *Additional charges apply.*

Rehearsal Space

Old Market Theatre (size, draped walls, painted concrete floor, booking required).

Other:

NO masking tape. Stage is to be marked with electrical or marking tape only.



THE ALAN ROSS CENTRE TECHNICAL SPECIFICATIONS



Billanook College

Venue

Venue Contacts:

Venue Address Billanook College
197 Cardigan Road
Mooroolbark, 3138

Fax 03 9725 8556

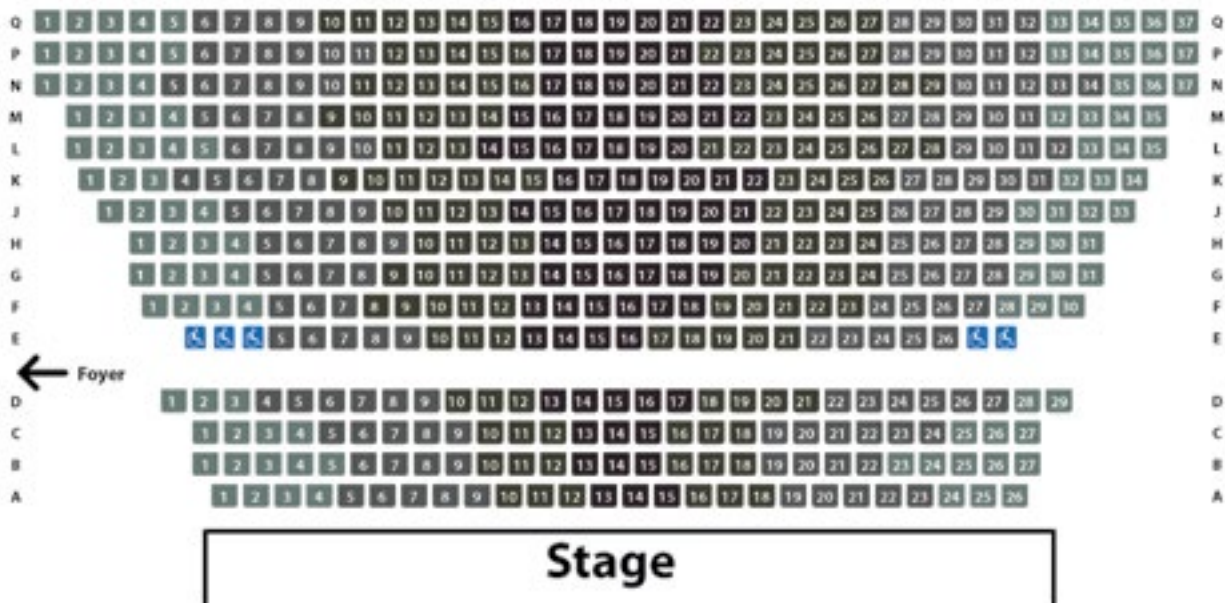
Staff Contacts:

Centre Operations Officer Andrew Spurrirt
Phone 03 9724 1199

Venue Plans

Seating

Billanook College Auditorium Seating Plan



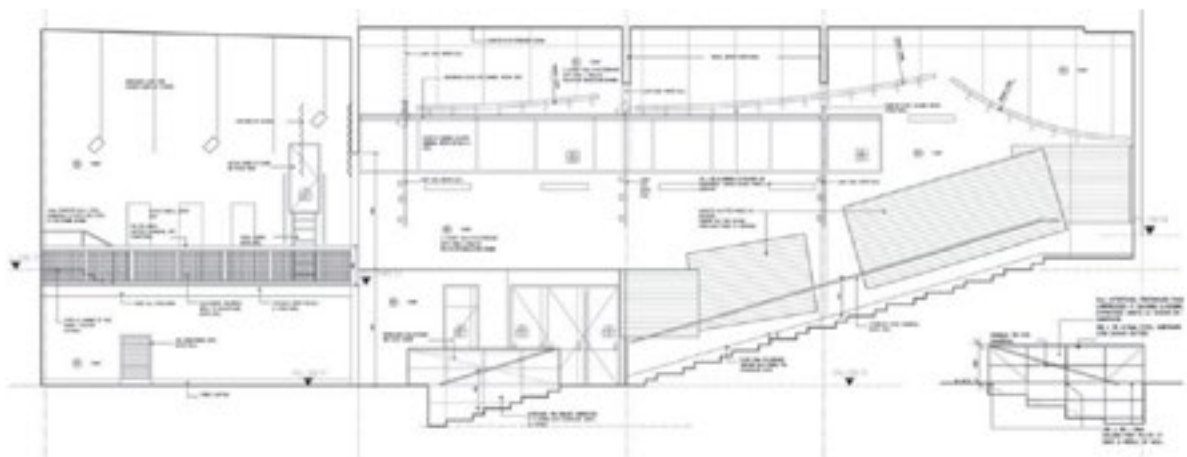
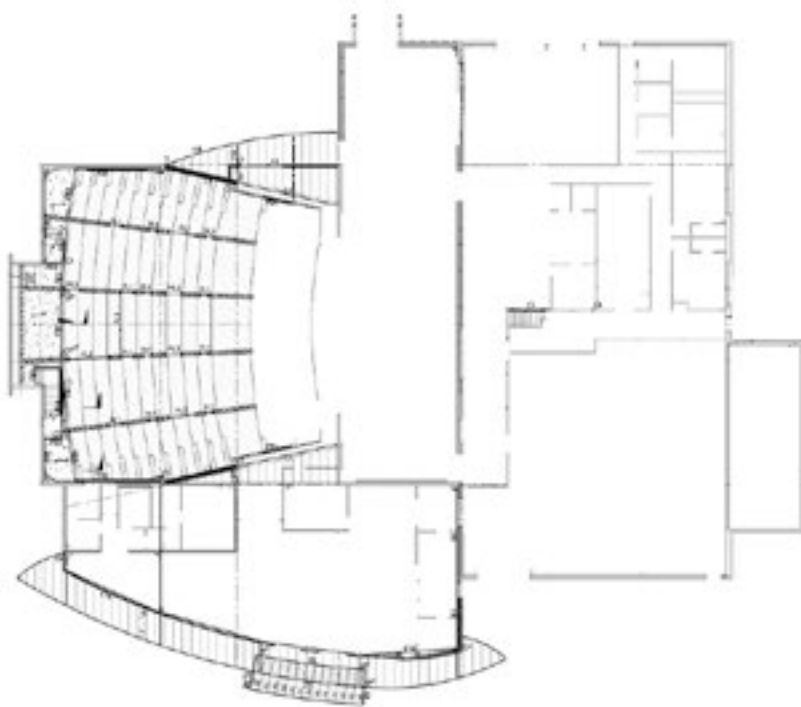
The Alan Ross Centre
Billanook College
197-199 Cardigan Road
Mooroolbark VIC 3138
Tel: (03) 9724 1199 Fax: (03) 9725 8556



THE ALAN ROSS CENTRE TECHNICAL SPECIFICATIONS



Billanook College



The Alan Ross Centre
Billanook College
197-199 Cardigan Road
Mooroolbark VIC 3138
Tel: (03) 9724 1199 Fax: (03) 9725 8556

