

THE ALAN ROSS CENTRE



Billanook College

# TECHNICAL SPECIFICATIONS

2019

**Contact:**  
**Andrew Spurrutt**  
**Centre Operations Officer**  
**Phone:** 03 9724 1199  
**Fax:** 03 9725 8556  
**Email:** [arcbookings@billanook.vic.edu.au](mailto:arcbookings@billanook.vic.edu.au)  
**Website:** [www.billanook.vic.edu.au](http://www.billanook.vic.edu.au)





## Stage

### Stage Description:

Proscenium Arch with tracking (no flying). Sprung floor covered with masonite sheets. No fixing/screwing into stage surface.

|                              |                       |
|------------------------------|-----------------------|
| Stage distributed load limit | 7.5KPa                |
| Stage point load limit       | 450Kg/cm <sup>2</sup> |
| Stage rake                   | No                    |

### Stage Dimensions:

Proscenium

|        |           |
|--------|-----------|
| Width  | 12 metres |
| Height | 6 metres  |

Stage

|       |   |
|-------|---|
| Width | 12 metres                               |
| Deep  | 7 metres (Curtain to cyc)               |
| Apron | 2 metres (Curtain to stage lip, curved) |

Wings

|            |            |
|------------|------------|
| Prompt     | 2.5 metres |
| Off Prompt | 11 metres  |

### Auditorium:

Raked seating – Entrance aisle between rows D & E.  
Seating capacity **475 (see map)**

### Orchestra Lift / Pit:

Orchestra Pit

No Orchestra Pit

### Flying Facilities:

Fly System

There is NO fly tower

5 full lengths of P1000 Unistrut are available for tracking – 4 pick-ups per track



# THE ALAN ROSS CENTRE TECHNICAL SPECIFICATIONS



Billanook College

## Hanging Plot:

MW = Motor Winch, TR = P1000 Unistrut Track

S.W.L.: Maximum distributed load including bar weight (Kg)

| Line # | Distance from Curtain | Line Type | S.W.L. | Venue Allocation | Intended Use<br>(Hiring company use)     |
|--------|-----------------------|-----------|--------|------------------|--|
| 1      | -6.5m                 | MW        | 250    | LX BAR #1        |  |
| 2      | -0.8m                 | MW        | 250    | LX BAR #2        |  |
| 3      | -200                  |           |        | Valance          |  |
| 4      | -100                  |           |        | House Curtain    |  |
| 5      | 400                   |           |        | Legs             |  |
| 6      | 500                   | MW        | 250    | LX BAR #3        |  |
| 7      | 700                   |           |        | Border           |  |
| 8      | 1300                  | MW        | 100    | Projector Screen | Access to bar by prior arrangement only. |
| 9      | 1400                  |           |        | Legs             |  |
| 10     | 1700                  | TR        |        | Unistrut         |  |
| 11     | 2200                  | TR        |        | Unistrut         |  |
| 12     | 2600                  |           |        | Border           |  |
| 13     | 2700                  |           |        | Mid Tabs         |  |
| 14     | 3200                  | MW        | 250    | LX BAR #4        |  |
| 15     | 3600                  | TR        |        | Unistrut         |  |
| 16     | 4200                  | TR        |        | Unistrut         |  |
| 17     | 4700                  | TR        |        | Unistrut         |  |
| 18     | 5200                  |           |        | Legs             |  |
| 19     | 5300                  |           |        | Borders          |  |
| 20     | 5500                  | TR        |        | Unistrut         |  |
| 21     | 5800                  | MW        | 250    | LX BAR #5        |  |
| 22     | 6600                  |           |        | Rear Tabs        |  |
| 23     | 6900                  |           |        | Cyclorama        |  |

## Drapery:

| *Type             | Material              | Colour | Width   | Height | Quantity |
|-------------------|-----------------------|--------|---------|--------|----------|
| Cyclorama         | Filled cloth          | White  | 16000mm | 8700mm | 1        |
| Upstage Tabs      | Wool, 50% gathering   | Black  | 8000mm  | 7630mm | 2        |
| Mid-stage Tabs    | Wool, 50% gathering   | Black  | 8000mm  | 7630mm | 2        |
| Borders           | Wool, 50% gathering   | Black  | 16000mm | 2500mm | 4        |
| Legs (360° index) | Wool, 50% gathering   | Black  | 2800mm  | 7630mm | 8        |
| House Curtain     | Velvet, 80% gathering | Black  | 7000mm  | 7200mm | 2        |
| Valance           | Velvet, 80% gathering | Black  | 14000mm | 2500mm | 1        |

### The Alan Ross Centre

Billanook College

197-199 Cardigan Road

Mooroolbark VIC 3138

Tel: (03) 9724 1199 Fax: (03) 9725 8556



# THE ALAN ROSS CENTRE TECHNICAL SPECIFICATIONS



Billanook College

## Access Equipment:

Elevated Work Platform

1 x JLG 20MVL motorised vertical lift.

EWP Restrictions

EWP licence required.

Ladders

1x 3m fibreglass

1x 3m aluminium (not for electrical use)

## Loading Dock:

Access

Loading Dock Height

Ground level - loading bay & stage are at the same height

Door Dimensions

5500mm High x 2750mm Wide

Restrictions / Obstructions

Larger trucks must park 90° to loading dock.

## Staging Notes:

All flown/tracked items must be rigged with rated equipment and are subject to approval by the Centre Operations Officer.

### The Alan Ross Centre

Billanook College

197-199 Cardigan Road

Mooroolbark VIC 3138

Tel: (03) 9724 1199 Fax: (03) 9725 8556



# THE ALAN ROSS CENTRE TECHNICAL SPECIFICATIONS



Billanook College

## Lighting

### Positions:

Stage LX Bars fixed – cannot be swung  
*See hanging plot for standard LX bar locations*

#### FOH LX #1

Curtain to lighting bar 8.9m @ 65 deg  
Width & Patch # 16m. (1 - 36)  
Notes 36 patch points, 2 x video, 1 x DMX & Ethernet

#### FOH LX #2

Curtain to lighting bar 6m @ 85 deg  
Width & Patch # 12m. (37 - 60)  
Notes 24 patch points, 2 x video, 1 x DMX & Ethernet

#### FOH LX #3

Curtain to lighting bar 6.5m @ 85 deg  
Width & Patch # 14m. (169 - 180, J1 - J12)  
Notes 24 patch points, 2 x video, 1 x DMX & Ethernet

#### FOH LX #4

Curtain to lighting bar 8m @ 75 deg  
Width & Patch # 14m. (120 - 144)  
Notes 24 patch points, 2 x video, 1 x DMX & Ethernet

#### FOH LX #5

Curtain to lighting bar 9m @ 65 deg  
Width & Patch # 14m. 145 - 148)  
Notes 24 patch points, 2 x video, 1 x DMX & Ethernet

#### FOH Booms (PS & OP)

(3) Booms per side  
Patches per boom 6. (61 - 96)  
Notes Standard rig has no lighting on these bars

#### STAGE

Patches & Patch # 6 per corner of stage (97 - 120)

### Control:

Lighting desk ETC ION XE 20-2K (2048 Channels) with 40 faders  
Signal output 4 x DMX512 outputs, RDM ready  
Signal distribution One stream of DMX to dimmers, one spare

### Dimmer Racks:

Total Dimmers 6 x Jands WMX-A = 72 dimmers @ 2.4kW  
2 x LSC 12 x 2.4k available by prior arrangement  
Dimmer Locations PS Catwalk

### House Lights:

Independent control Yes from Control Room and Stage Manager





## Stage Luminare

### Profiles

| Make   | Model       | Angle   | Detail/Accessories      | Watt | Total |
|--------|-------------|---------|-------------------------|------|-------|
| ETC    | Source 4    | 15 - 30 |                         | 750w | 12    |
| ETC    | Source 4    | 25 - 50 |                         | 750w | 10    |
| ETC    | Source 4 Jr | 25 - 50 | 3 x 3 rows - downlights | 575w | 9     |
| Selcon |             | 24 - 40 |                         | 650w | 4     |

### Fresnels

| Make      | Model | Detail/Accessories | Watt  | Total |
|-----------|-------|--------------------|-------|-------|
| Spotlight | Combi |                    | 1200w | 12    |

### PC

| Make      | Model | Detail/Accessories | Watt  | Total |
|-----------|-------|--------------------|-------|-------|
| Spotlight | Combi |                    | 1200w | 12    |
| Spotlight | Combi |                    | 650w  | 10    |

### Par Cans

| Make       | Model   | Angle     | Detail/Accessories | Watt   | Total |
|------------|---------|-----------|--------------------|--------|-------|
| LED PixPar | Quad 12 | Downlight | RGBW               | 12 x8w | 15    |
| LED        | LED PAR | Side      | From side booms    |        | 8     |

### CYC Wash

| Make   | Model       | Detail/Accessories | Watt | Total |
|--------|-------------|--------------------|------|-------|
| Altman | Spectra 200 | RGBA               | 200w | 5     |

### Followspots

| Make      | Model   | Angle | Detail/Accessories | Watt  | Total |
|-----------|---------|-------|--------------------|-------|-------|
| Spotlight | Vedette |       |                    | 2500w | 2     |

### Movers

| Make | Model | Angle | Detail/Accessories | Watt     | Total |
|------|-------|-------|--------------------|----------|-------|
| LED  | Aura  |       | RGBW Zoom Wash     | 19 x 15w | 6     |
| PSGL | 280S  |       | LED Zoom Spot      | 280w     | 4     |



# THE ALAN ROSS CENTRE TECHNICAL SPECIFICATIONS



Billanook College

## **Power:**

- 3 Phase Outlets (all 40amp Wilco Plugs)
- 8 x PS Gallery
- 2 x Rear wall (P & OP)

## **Cabling:**

- 240v Extension Cable
- The venue has a good stock of 240v (10 amp) extension leads to accommodate our standard rig.
- Any additional equipment may require additional leads to be sourced.

## **Looms:**

- The venue has a limited supply of looms
- 1 x 15m 4 way 240v
- 1 x 10m 4 way 240v

## **Lighting Notes:**

There is no gantry/catwalk. Luminaries must be hung at floor level and can be focussed from the EWP.

The venue has a preferred supplier for hiring additional lighting. Please contact us for details.





## Audio

### Control Positions:

#### Control Room

Rear centre. Glass window slides to fully open.

#### Auditorium

Centre of rear two rows. 10 seats removed. Audio operator will need to move through audience to mixing position. Limited access to Control Room technology.

#### Other

Sub-mix from any tie-line patch. Sub-mixer to be patched through main console.

### Control & Amplification:

#### Primary Mixer

- Yamaha CL5  
72 channels, 8 stereo, 24 mix output, 8 matrix output.

#### I/O Racks

- RIO 3224 & 1608

#### Amplifiers

- Crown XLS802D – for stage lip fill (JBL AC16s)  
(All FOH speakers are powered)

#### Driverack

- DBX-4800

### Speakers:

#### FOH Speakers

(4) JBL VP212 speakers  
(2) JBL VPSB7118 subs

#### Foldback

Downstage - two JBL AC16  
Upstage (Flown) - three JBL AC16







## Playback

| Item          | Make  | Model | Detail | Total |
|---------------|-------|-------|--------|-------|
| Qlab Software | Apple | I-Mac |        | 1     |

## Microphones (Extra Costs)

| Make       | Model       | Detail/Accessories | Use        | Total |
|------------|-------------|--------------------|------------|-------|
| Shure      | MX418       |                    | Lectern    | 2     |
| Shure      | SM58        |                    | Vocal      | 4     |
| Shure      | SM57        |                    | Instrument | 8     |
| Shure      | MX393       |                    | Boundary   | 4     |
| Sennheiser | IMX6A       | Radio Microphone   | Headset    | 12    |
| Sennheiser | G300 series | Radio Microphone   | Handheld   | 12    |

## Accessories

| Item              | Model | Detail/Accessories | Total |
|-------------------|-------|--------------------|-------|
| Microphone Stands | K&M   | With boom arm      | 10    |

## Line Patching

| Location          | Quantity | Numbering | Detail               |
|-------------------|----------|-----------|----------------------|
| OP Downstage      | 24       | 1-24      | 24 sends, 12 returns |
| OP Upstage        | 24       | 25-36     | 12 sends, 4 returns  |
| P Downstage       | 24       | 37-48     | 12 sends, 12 returns |
| P Upstage         | 24       | 49-60     | 12 sends, 4 returns  |
| Studio            | 24       | 61-84     | 24 sends, 6 returns  |
| Prod Desk & Foyer | 6        | 85-91     | 6 sends, 6 returns   |
| Stage Traps       | 6        | 92-97     | 6 sends, 6 returns   |

## Audio Patching

All line patching is to the Rio I/O racks located in the Bio Box

## Multicore

In addition to many tie-lines throughout the venue:

1 x 30m, 16 sends (XLR), 4 returns (TRS)

2 x 10m, 12 sends (XLR), 4 returns (TRS)

## Audio Notes:

A 300mm conduit is available from the Control Room to Stage Right.

A hearing loop is available in the Foyer & Auditorium.





## Audio Visual

Projector (Extra Charge)

| Type      | Model      | Detail/Accessories           | Total |
|-----------|------------|------------------------------|-------|
| Panasonic | PT-RZ970BE | 10,000 lumen laser projector | 1     |

### Screens:

Projection screen:

Viewmaster Projection Screen- motorised (2695 x 4310mm)

Format 16:10

Positioned in front of mid tabs

### Mixer:

Rowland V40HD - Multi format HD mixer

### Projector Rigging Points:

Projector is rigged just behind Lighting Bar 1 in the Auditorium.

### Cabling:

A good stock of AV cabling – RCA, BNC – to accommodate the venue's own equipment.





## Backstage

### Communications:

Stage Manager's Desk

Stage Manager's desk is located OFF PROMPT.

Clock, Audience recall, Talkback, House Light control, Paging Mic, LCD monitor

Talkback

Master Unit

Ezicom200

Total sub stations

6 x Ezicom 100 Beltpacks

1 x permanently for Stage Manager

Total headsets

7 x CC95 single muff headsets

Talkback patching located at: 2 x Control Room

Stage Manager's Desk

Followspots (2)

Prompt Stage

### Production Facilities:

Production Desk (if required)

Production Desk set-up in the centre of Row E. DMX, GPO.

Phone

Emergency calls can be made from a phone in the Centre Operations Officer's Office.

Internet access

Access may be available by prior arrangement. This service will attract additional charges.

### Backstage:

Tea/coffee facilities Yes

Fridge Yes

Microwave Yes

Running Water Yes

## Additional Facilities & Information

### Orchestral:

Yamaha C2 Grand Piano - *Additional charges apply.*

Rehearsal Space

Old Market Theatre (size, draped walls, painted concrete floor, booking required).

Other:

**NO masking tape.** Stage is to be marked with electrical or marking tape only.



# THE ALAN ROSS CENTRE TECHNICAL SPECIFICATIONS



Billanook College

## Venue

### Venue Contacts:

Venue Address Billanook College  
197 Cardigan Road  
Mooroolbark, 3138

Fax 03 9725 8556

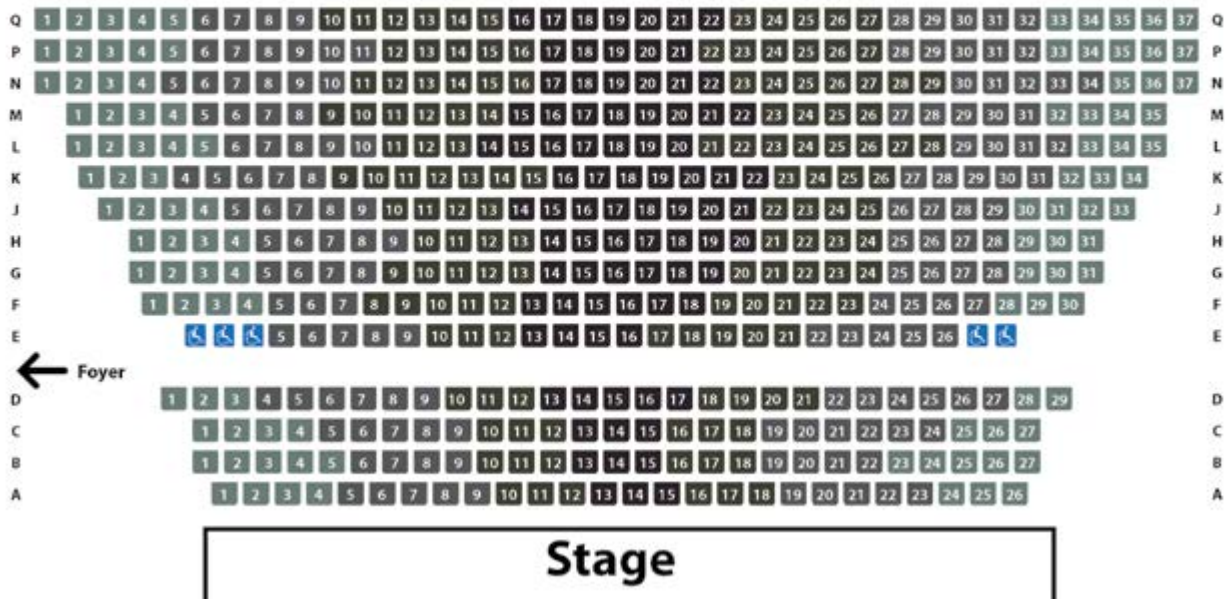
### Staff Contacts:

Centre Operations Officer Andrew Spurritt  
Phone 03 9724 1199

## Venue Plans

### Seating

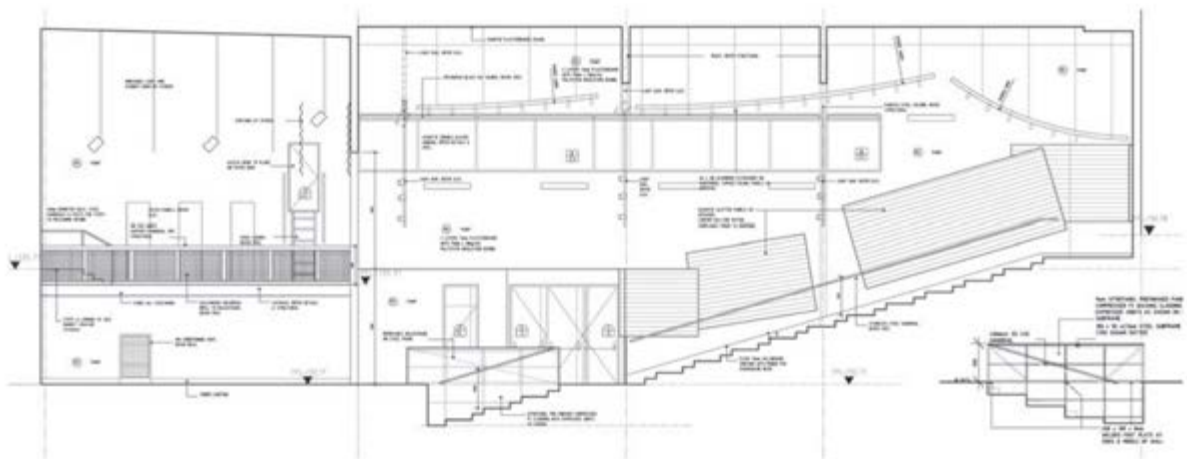
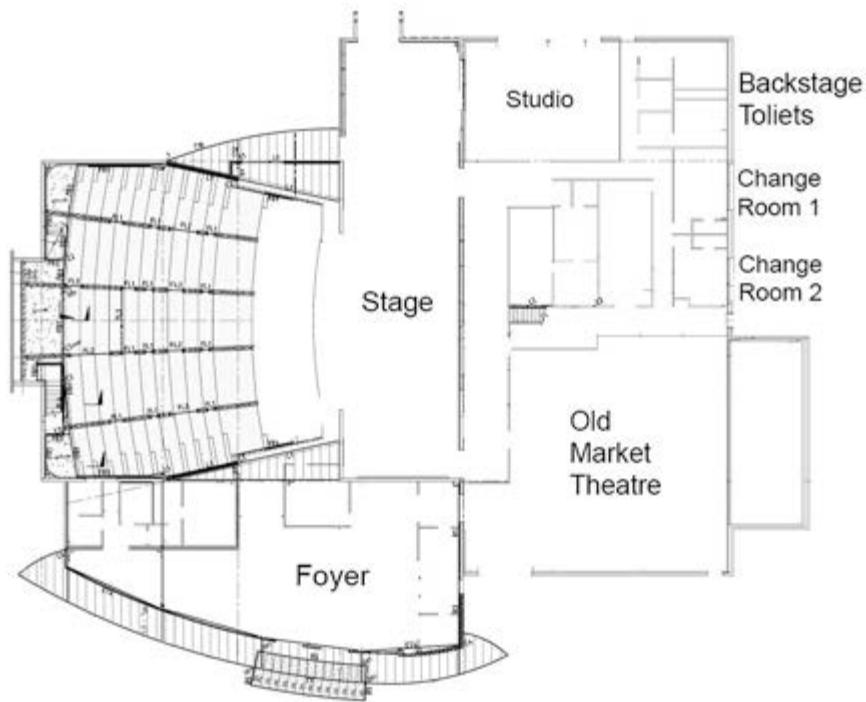
### Billanook College Auditorium Seating Plan



# THE ALAN ROSS CENTRE TECHNICAL SPECIFICATIONS



Billanook College



**The Alan Ross Centre**  
Billanook College  
197-199 Cardigan Road  
Mooroolbark VIC 3138  
Tel: (03) 9724 1199 Fax: (03) 9725 8556

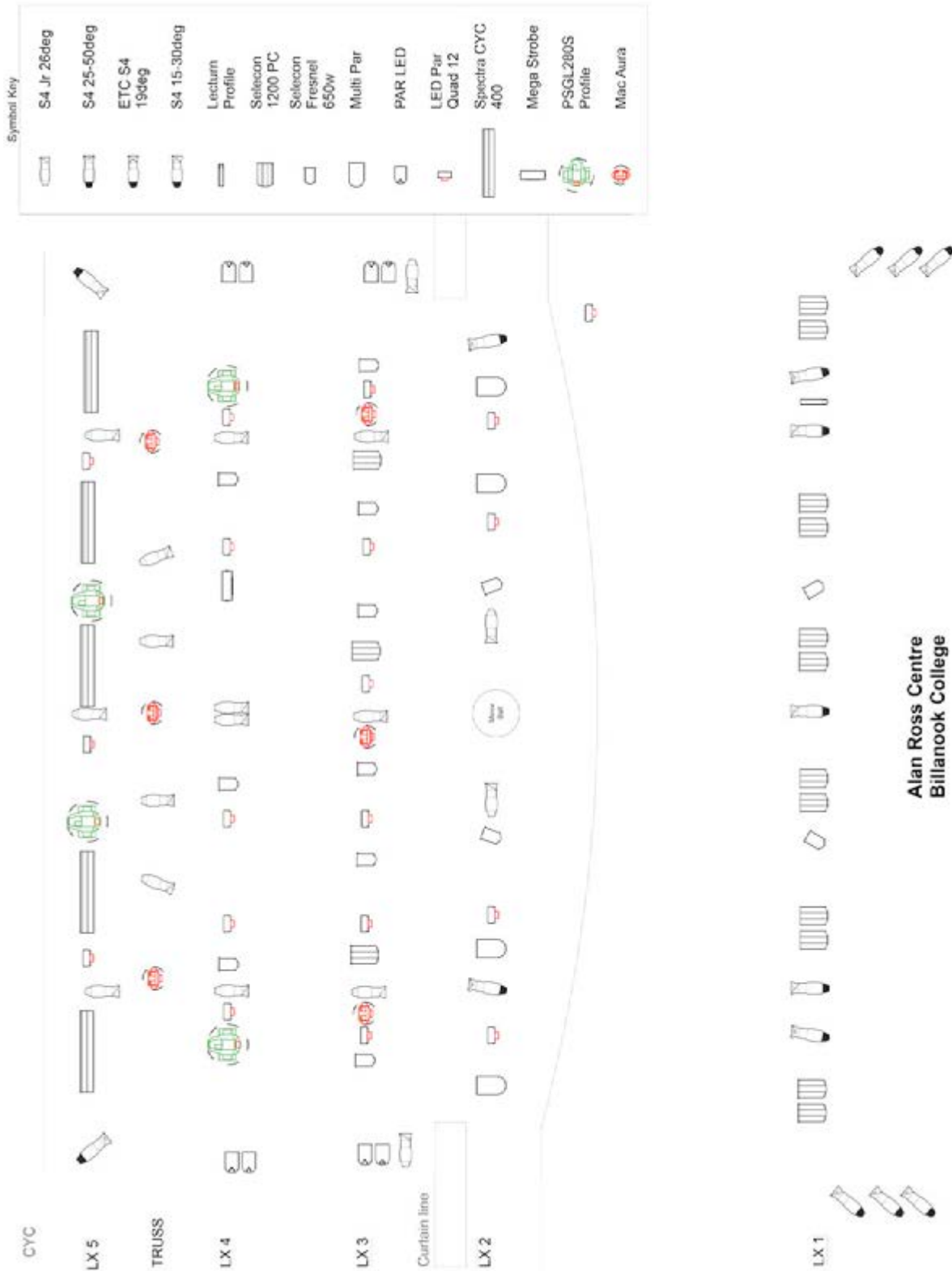


# THE ALAN ROSS CENTRE TECHNICAL SPECIFICATIONS



Billanook College

## Standard Lighting Rig



**The Alan Ross Centre**  
 Billanook College  
 197-199 Cardigan Road  
 Mooroolbark VIC 3138  
 Tel: (03) 9724 1199 Fax: (03) 9725 8556

